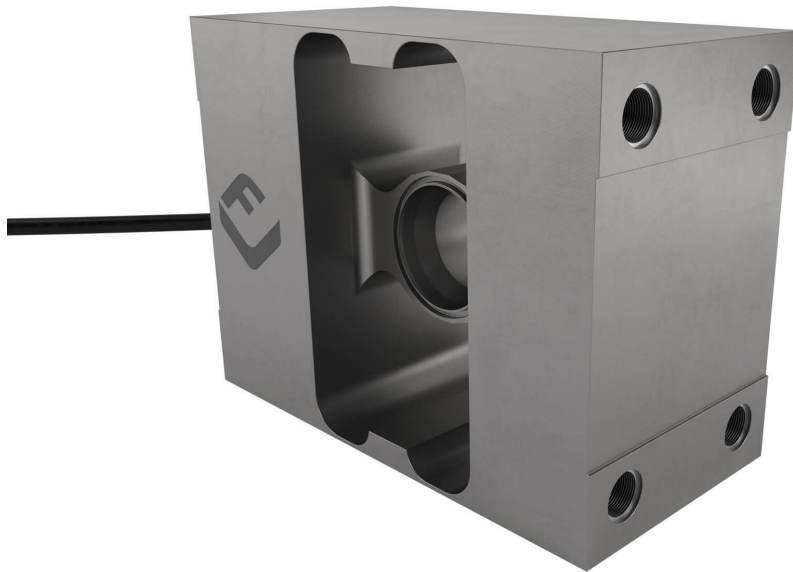


---

# PC2 single point load cell



## product description

End-mounted, single point load cell for general industrial weighing machinery. Fully sealed and constructed from stainless steel the PC2 is fully off-centre load adjusted to provide high accuracy weighing results in dynamic and static equipment. Ideal for very large single load cell platforms, up to 1 mtr<sup>2</sup> and low capacity hopper systems.

## applications

Large bench and platform scales, checkweighers, vessel and hoppers weighing applications.

## key features

Stainless steel construction

---

Capacities of 20kg and 150kg

---

Hermetically sealed to IP68

---

Suitable for wall mounting

---

For platforms sizes of up to 1,000 x 1,000mm

---

High input resistance

---

## approvals

ATEX hazardous area approval for zones 0, 1, 2, 20, 21 and 22

---

FM hazardous area approval

---

## accessories

Compatible range of electronics

---



RoHS  
compliant



## specifications

|   |              |  |                    |
|---|--------------|--|--------------------|
| Maximum capacity ( $E_{max}$ )                            | kg           | 20 / 150   |                    |
| Accuracy class according to OIML R60                      |              | (GP)   | G3*                |
| Maximum number of verification intervals ( $n_{LC}$ )     |              | n.a.   | 3,000              |
| Minimum load cell verification interval ( $v_{min}$ )     |              | n.a.   | $E_{max} / 10,000$ |
| Temperature effect on minimum dead load output ( $TC_0$ ) | %*RO/10°C    | ± 0.0400   | ± 0.0140           |
| Temperature effect on sensitivity ( $TC_{RO}$ )           | %*RO/10°C    | ± 0.0200   | ± 0.0100           |
| Combined error  | %*RO         | ± 0.0500   | ± 0.0200           |
| Non-linearity   | %*RO         | ± 0.0400   | ± 0.0166           |
| Hysteresis  | %*RO         | ± 0.0400   | ± 0.0166           |
| Creep error (30 minutes)                                  | %*RO         | ± 0.0600   | ± 0.0166           |
| Rated Output (RO)   | mV/V         | 2 ± 5%   |                    |
| Zero balance  | %*RO         | ± 5  |                    |
| Excitation voltage  | V            | 5...15   |                    |
| Input resistance (100 V DC) ( $R_{LC}$ )                  | Ω            | 1,100 ± 50   |                    |
| Output resistance ( $R_{out}$ )                           | Ω            | 960 ± 50   |                    |
| Insulation resistance                                     | MΩ           | ≥ 5,000  |                    |
| Safe load limit ( $E_{lim}$ )                             | %* $E_{max}$ | 200  |                    |
| Ultimate load   | %* $E_{max}$ | 300  |                    |
| Safe side load  | %* $E_{max}$ | 100  |                    |
| Maximum platform size; loading acc. to OIML R76           | mm           | 600 x 600 for 20 kg / 1,000 x 1,000 for 150 kg                           |                    |
| Maximum off centre distance at maximum capacity           | mm           | 250 for 20 kg / 400 for 150 kg   |                    |
| Compensated temperature range                             | °C           | -10...+40  |                    |
| Operating temperature range                               | °C           | -40...+80 (ATEX -40...+60)   |                    |
| Load cell material  |              | stainless steel 17-4 PH (1.4548)   |                    |
| Sealing   |              | complete hermetic sealing; cable entry sealed by a glass to metal header |                    |
| Protection according EN 60 529                            |              | IP68 (up to 2 m water depth) / IP69K                                     |                    |
| Packet weight   | kg           | 1.8 (20kg), 2.0 (150kg)  |                    |

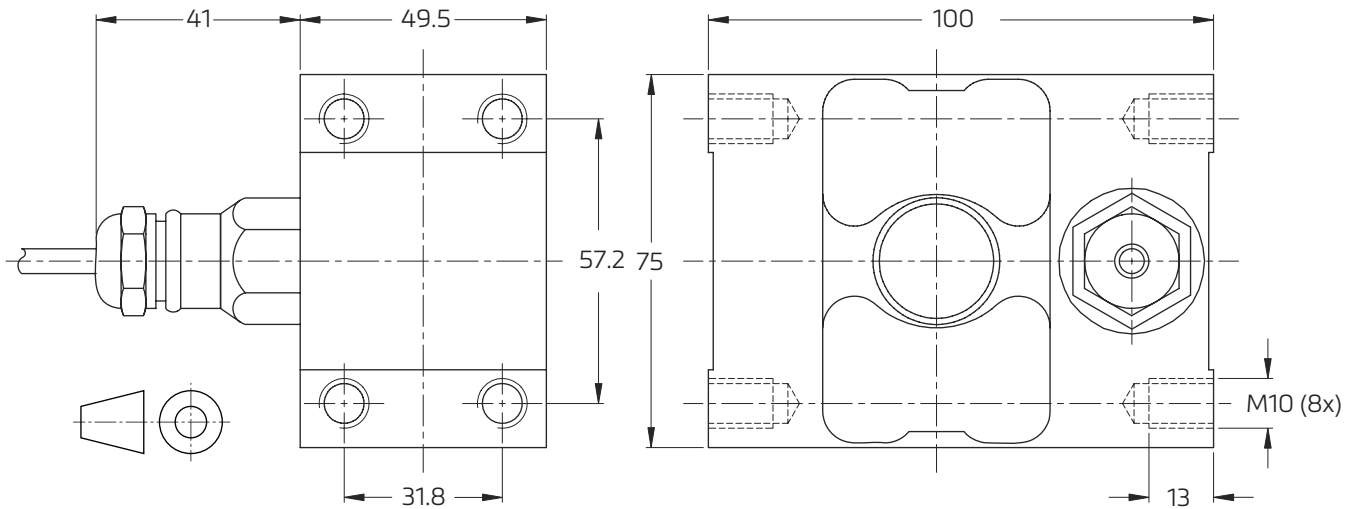
\* corresponds to C3 quality, test certificate not available

The limits for Non-Linearity, Hysteresis, and  $TC_{RO}$  are typical values.

The sum of Non-linearity, Hysteresis and  $TC_{RO}$  meets the requirements according to OIML R60 with pLC=0.7.



## product dimensions (mm)



Mounting bolts M10 8.8; torque 50 Nm. Torque value assumes oiled threads.

## wiring

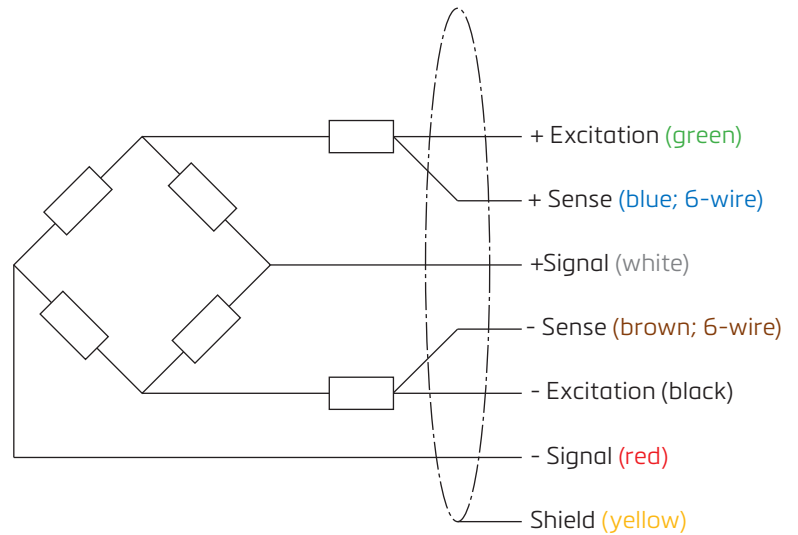
The load cell is provided with a shielded, 6 conductor cable (AWG 26) or with a shielded, 4 conductor cable (AWG 24).

Cable jacket: polyurethane

Cable length: 3 m

Cable diameter: 5 mm

The shield is floating or connected to the load cell body



Specifications and dimensions are subject to change without notice.