

52-02 rubber foot



product description

Flintec supports aim to prevent unwanted forces from affecting load cell performance. The 52-02 is designed to deliver high accuracy weighing results when combined with the blind-hole load introduction available on our load cells.

The 52-02 rubber foot is self-aligning making ideal for industrial platform scales and a wide range of weighing tasks. The height is adjustable by shims. It is compatible with the SB4, SB5, SLB, SB9 and SB14 load cells. A special low-profile foot is also available.

applications

Industrial platform scales, low capacity vessel weighing systems.

accessories + options

Fixation plate

Low-profile foot is available

key features

Self-aligning design

Blind-hole load introduction

Low profile

Height adjustable with shims

Easy to install

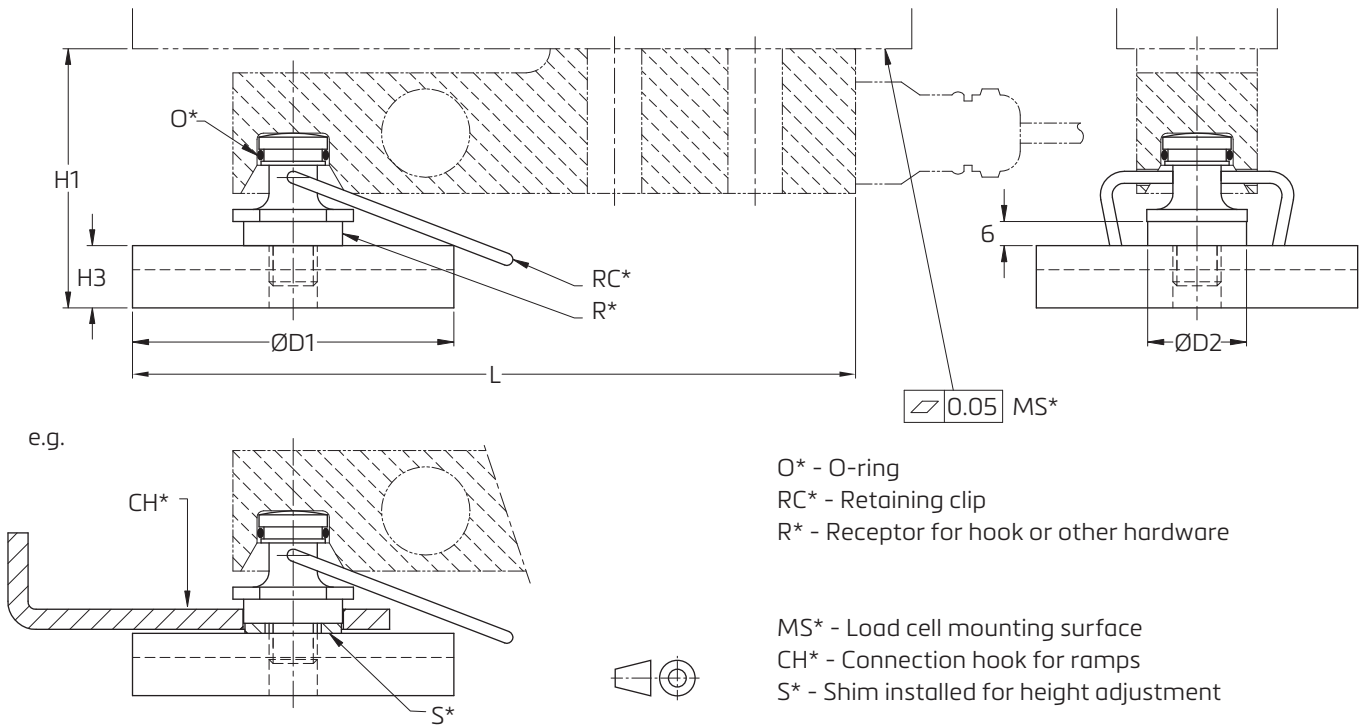
Zinc plated tool steel or stainless-steel construction options

Suitable for a wide range of load cell capacities from 100kg to 10,000kg

W&M certified



product dimensions (mm)



O* - O-ring
 RC* - Retaining clip
 R* - Receptor for hook or other hardware

MS* - Load cell mounting surface
 CH* - Connection hook for ramps
 S* - Shim installed for height adjustment

Load Cell Type	Capacity	D1	D2	L	H1	H2	H3
SLB / SB9	200...500 lb (91...227 kg) / 250 kg	60	24.5	154	61*	54*	16
	1...5 klb (454...2268 kg) / 500...2000 kg	80		164			
SB14	500 lb (227 kg)	60		154	60 / 62*	53 / 55*	
	1...5 klb (454...2268 kg)	80	164				
	10 klb (4536 kg)	100	34.5	209	85	68	18
SB4 / SB5	5...20 kN (510...2039 kg)	80	24.5	180	65	58	16
	50 kN (5099 kg)	100	34.5	219	90	73	18
	100 kN** (10179 kg)	125		278	109	n.a.	26

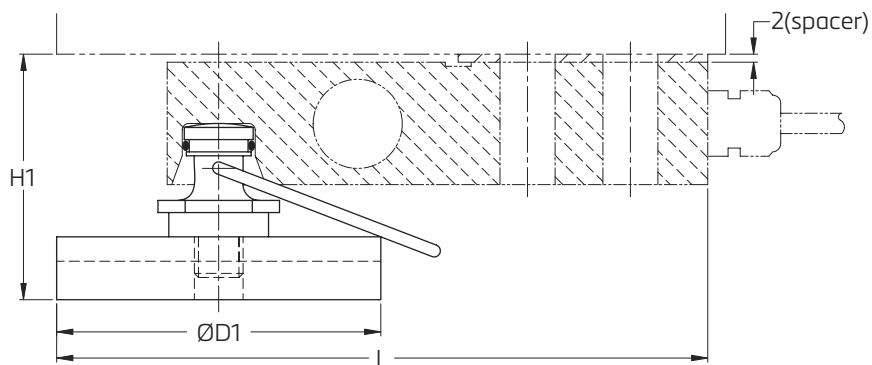
* Including spacer.

** A special retaining clip is available.

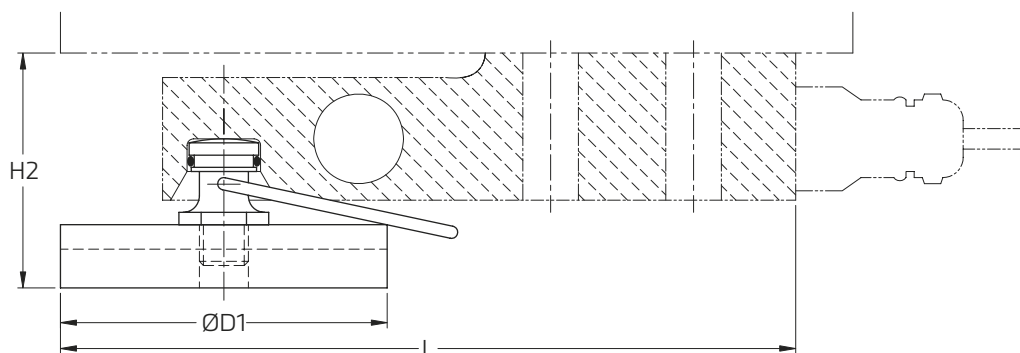
CAD files for customer's own application drawings are available for download from the Flintec homepage.

product dimensions cont.

Details of SLB load cell



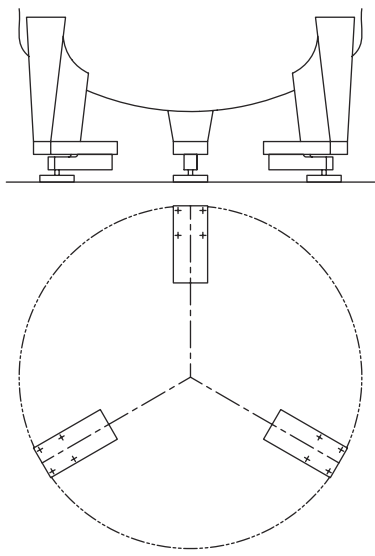
Low profile foot



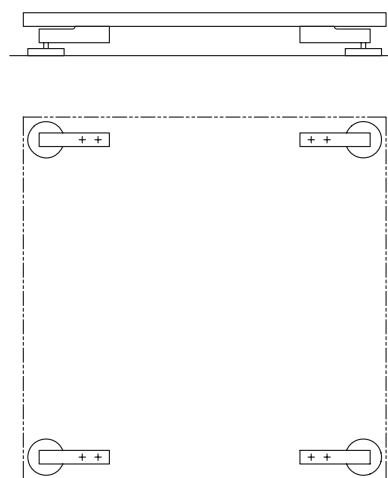
*The low-profile foot has no receptor for hook or other hardware

example setups

Tank weighing system with 3 load cells
(recommended base plate 52-00 included)



Platform scale with 4 load cells



Specifications and dimensions are subject to change without notice.