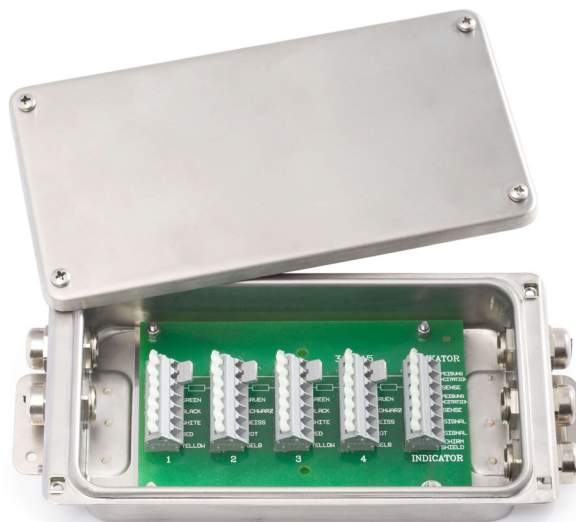


KEK-4 junction boxes



product description

The KEK-4 is a stainless-steel junction box designed to connect up to 4 load cells in parallel. The junction box can be connected with a shielded 6-wire cable to the instrumentation. Corner trimming by the addition of resistors.

applications

Universal applications in weighing machinery, process weighing, test & measurement and process automation and control sectors.

key features

Stainless steel construction

Environmental protection rated to IP65

Connects 4 load cells

Compatible with 4 or 6 wire devices

Maximum cable diameter of 8mm

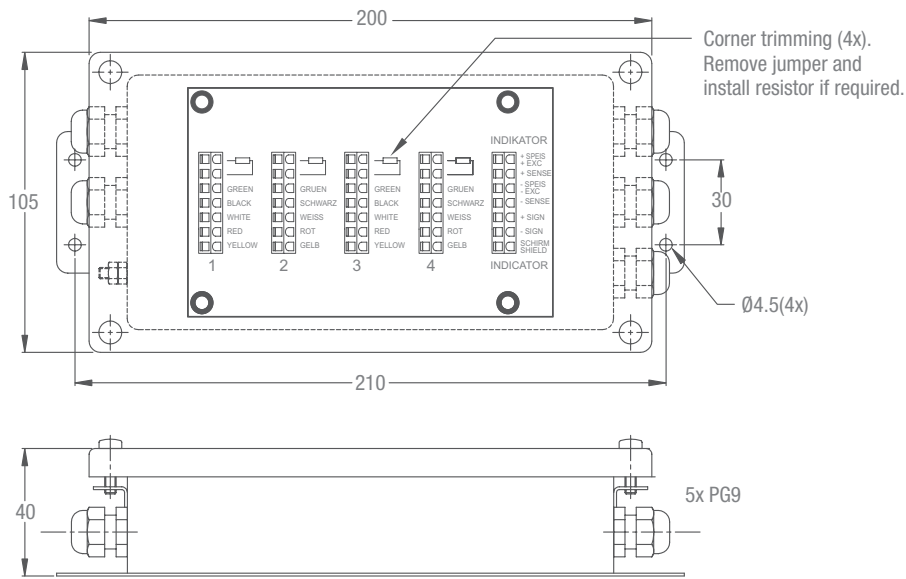
Cable connection with clamping terminals



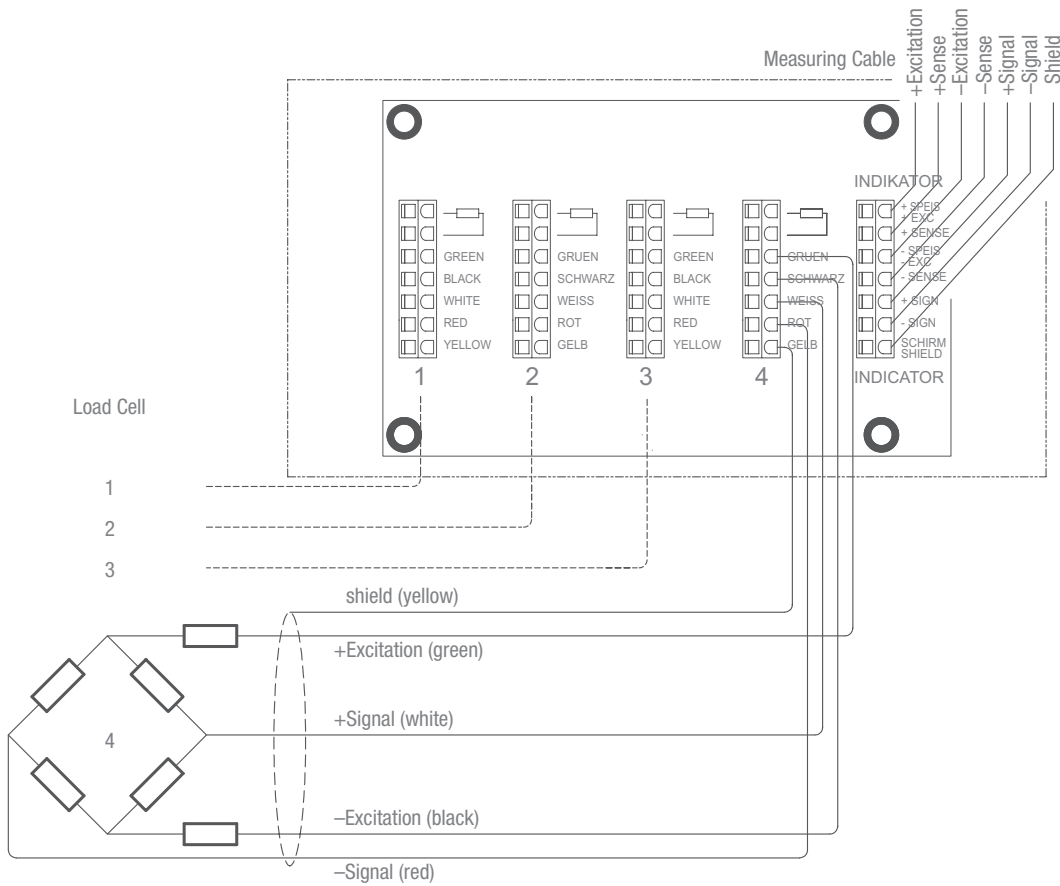
RoHS
compliant



product dimensions (mm)



wiring



Dimensions and specifications are subject to change without notice.

